

Young People in York 18-25

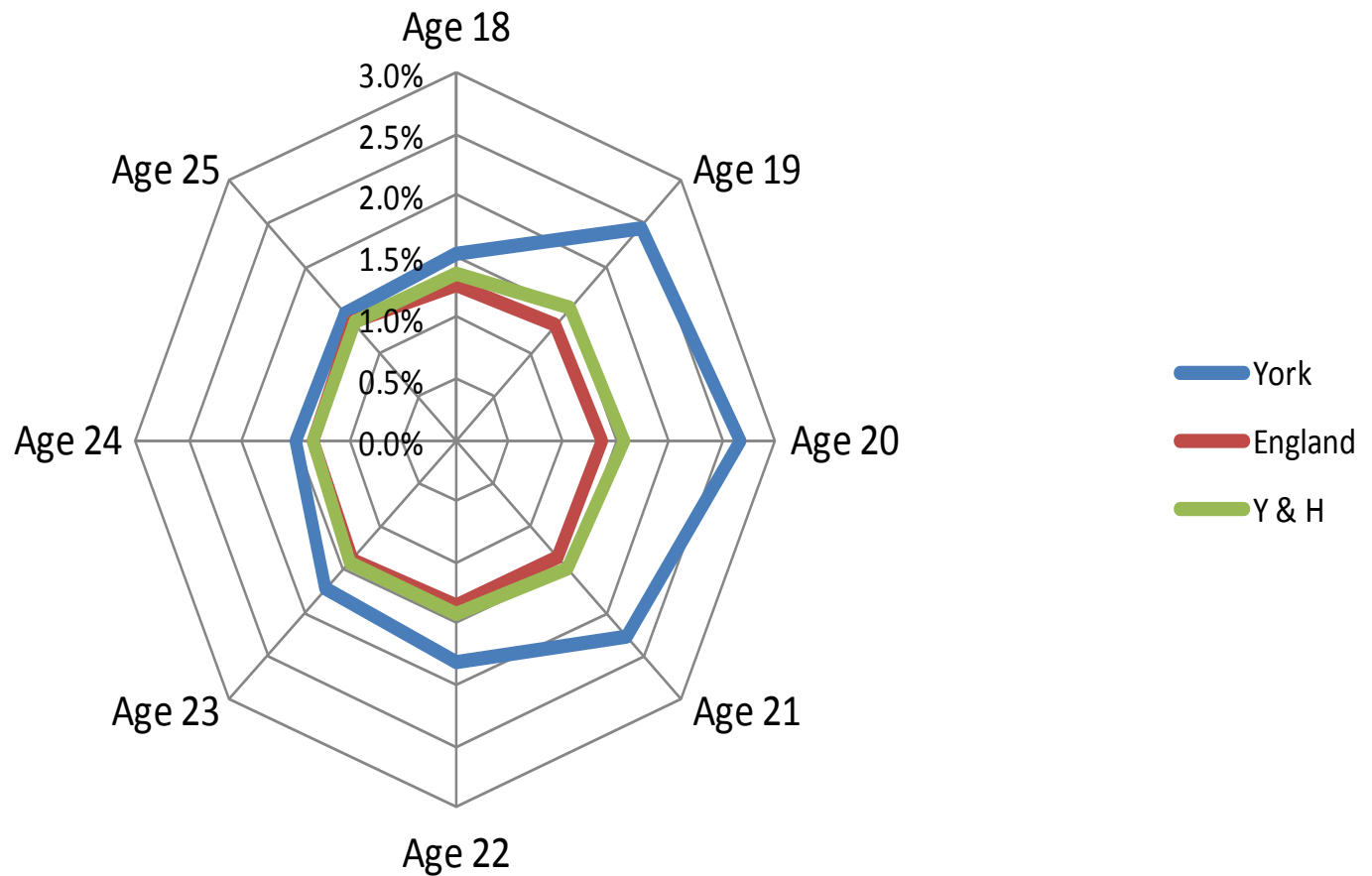
- Establish an outcomes profile for young people in the 19-25 age group, including those who are / have been looked after, have LDD, and mental health needs.
- Extend the focus of the YorOK Board to include young people aged 19-25.

Child – Adolescence – Young People

- **Children and Young Peoples Plan** - 'children' includes all children aged 0-18 years who live in York, care leavers up to the age of 25 who are entitled to support with their education and training, and a small number of young people aged 0-25 who have particularly complex health, education and care needs.
- The United Nations definition of young people, includes all those under the age of 25;
- Public Health England also use age range:
 - *Key elements of development, particularly emotional development, continue until the early 20s.*
 - *Many services end for young people at 16 or 18, yet adult services may not always start at this point. (Important to ensure that service provision fits with the evolving scientific evidence base.)*

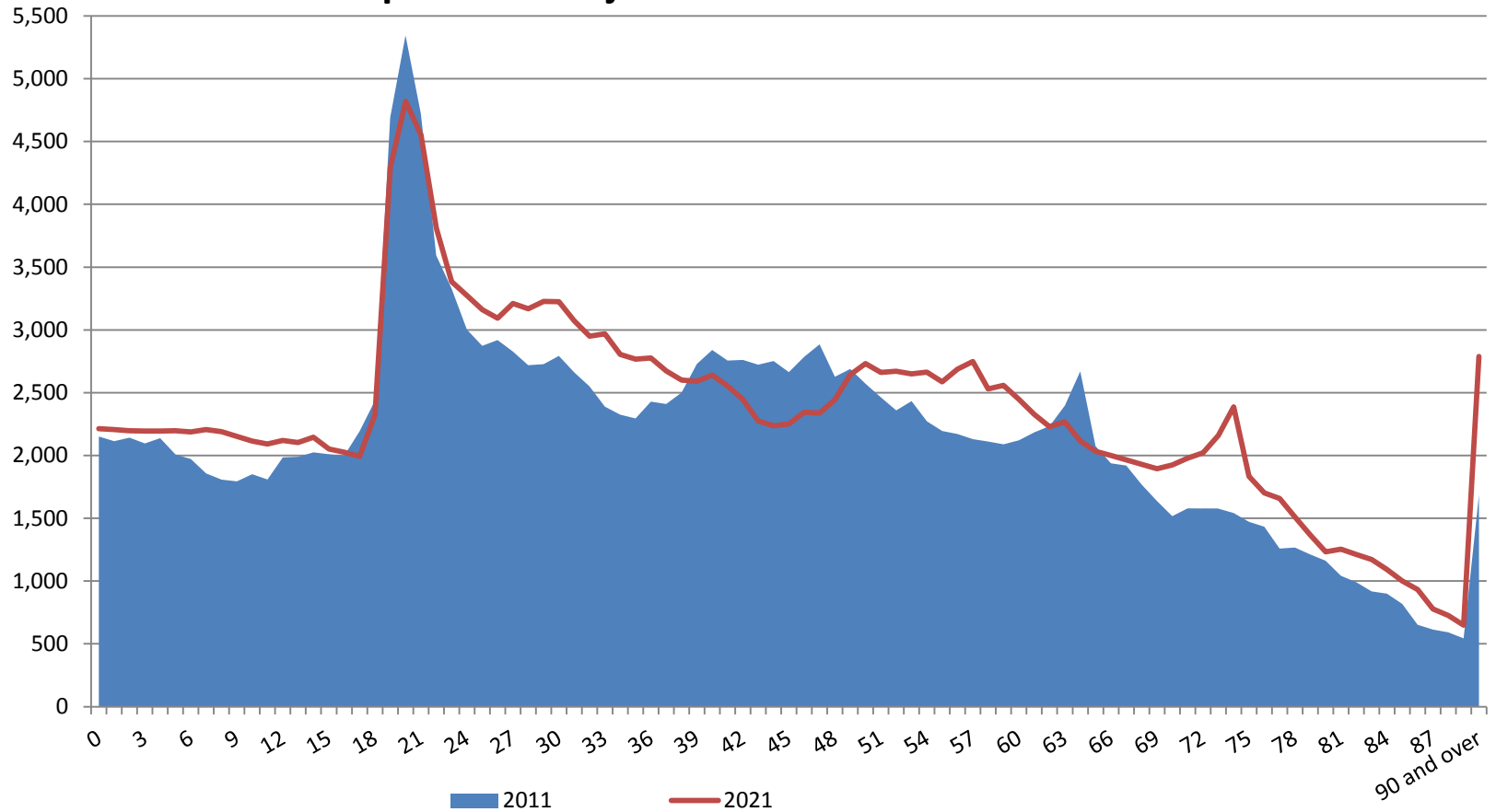
Age Structure

Age Structure - Proportion of 18 to 25 year olds



Population Projection

Population Projections 2011 to 2021



Education – Qualification

- Top quartile.....but

Gap between non FSM and FSM at 19 (2011/12):

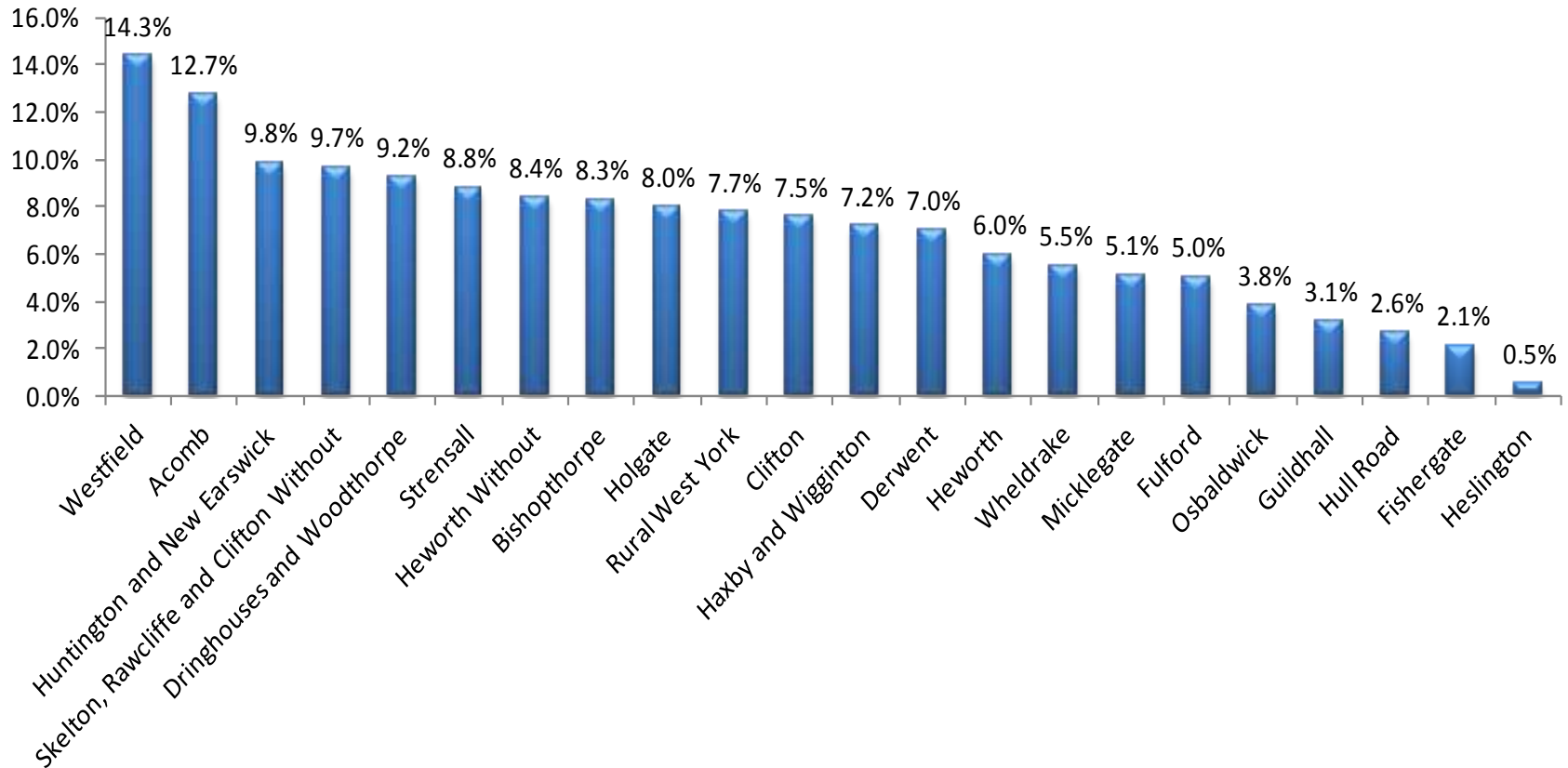
- Level 2 inc. Eng, math rank 142nd
- Level 2 rank 147th
- Level 3 rank 128th

RPA:

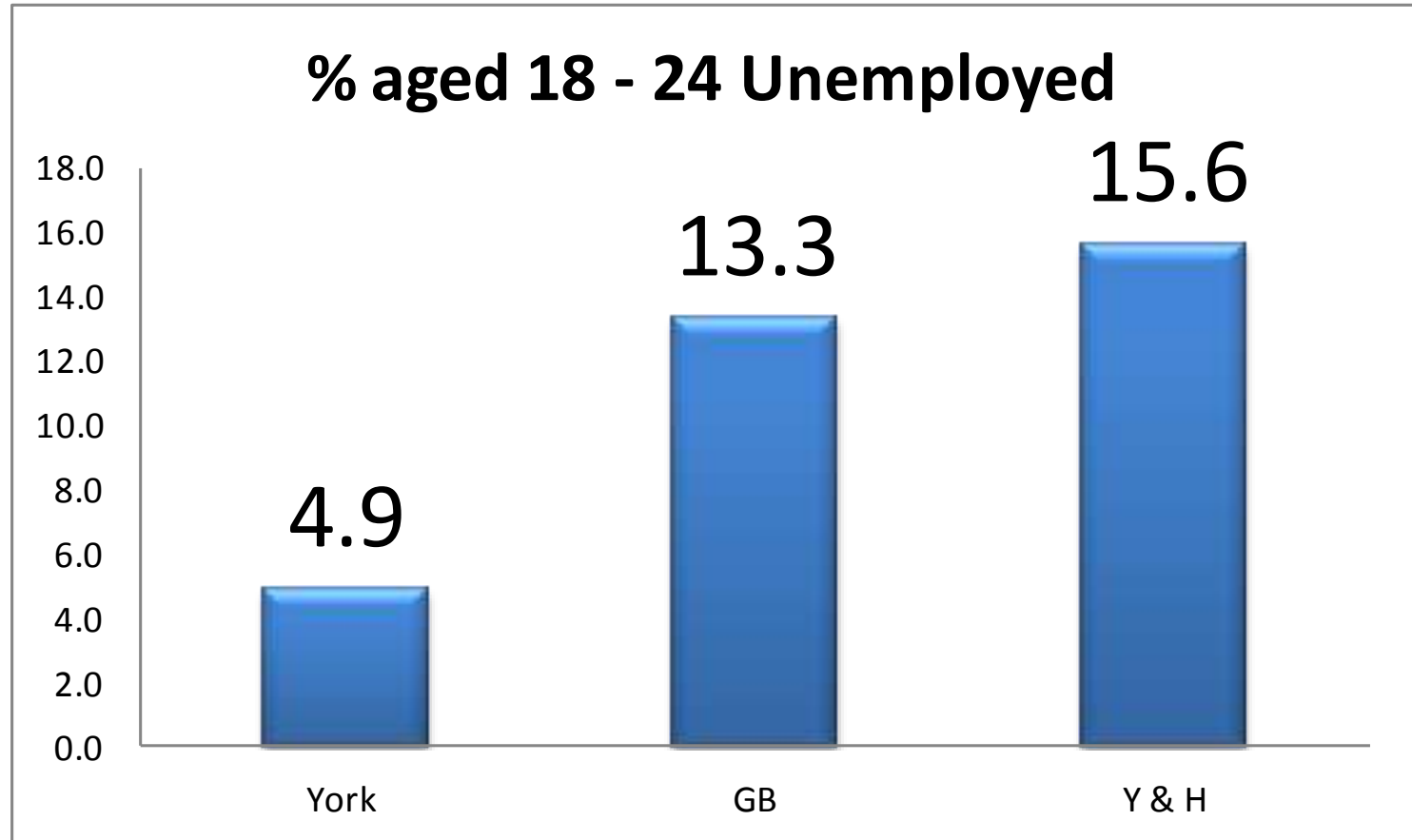
- Participation at 16 and 17 rank 39th (March 2013)

Qualifications – 2011 Census

Proportion of population aged 16-24 with No qualifications

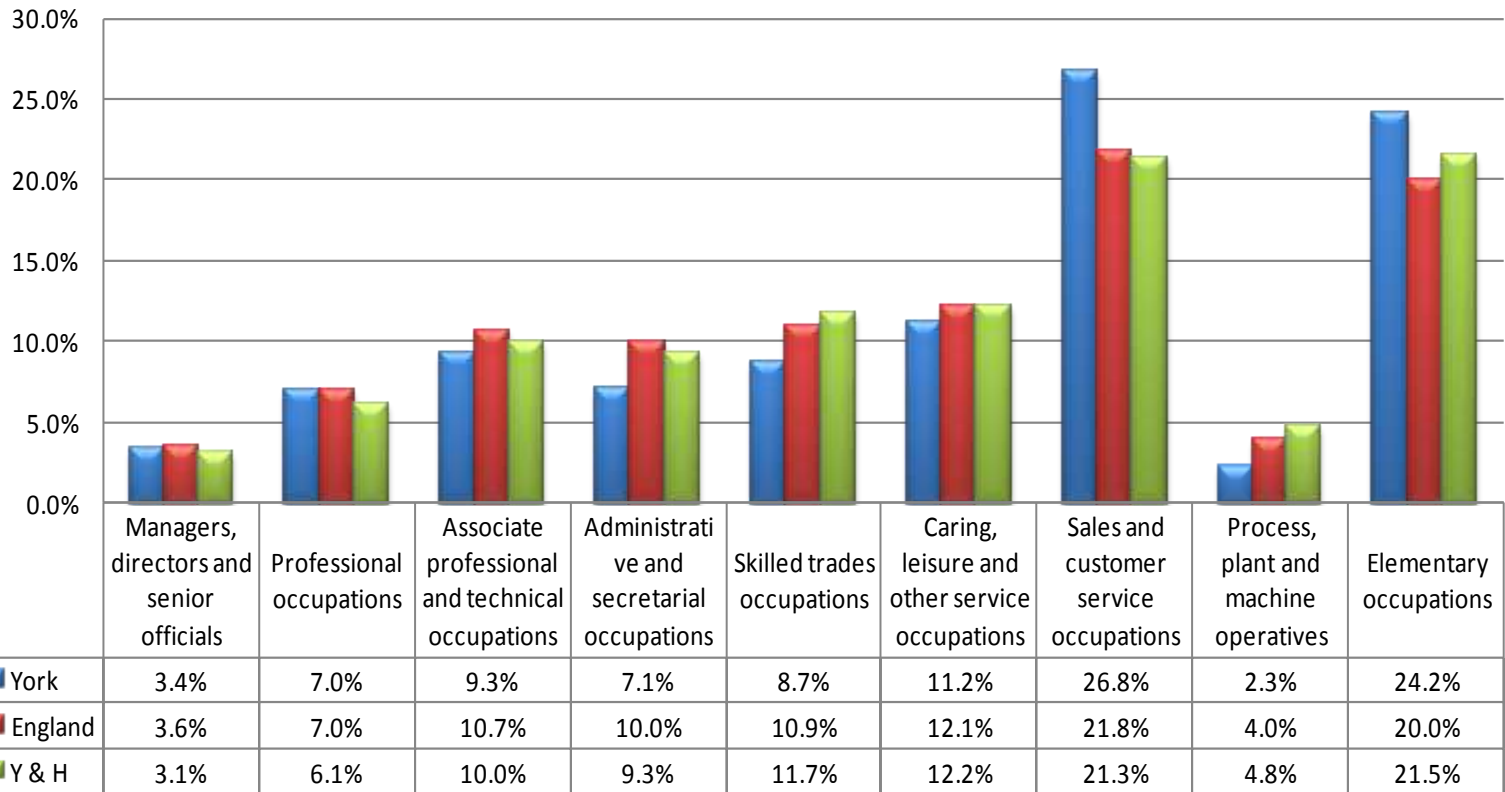


Unemployed – May 2013



Occupation

Occupation of those aged 16 to 24 - 2011 Census



- Proportionately more of York's population aged 16-24 work in Sales and customer service occupations and elementary occupations
- Proportionately less of York's population aged 16-24 work in Process, plant and machine operative and skilled trades occupations
- The proportion of York's population aged 16-24 who work in either Managerial, director , senior official and professional occupations is roughly in-line with the England average.

NEET 207

- Offending – current or historical (59) 29%
- Young parent/pregnant (40) 19%
- PSI (CYS) engagement – current /historical (30) (14%)
- **Education**
- 143 of 207 NEETs had a known York school as their last registered school. Of these 143, 56% came from 3 schools containing 20% of York Year 11 pupils.
- 37% of NEETs were recorded as having Learning Difficulties or Disabilities (LDD) which is a much higher proportion than the general York school population.
- Location – clifton, westfield, Heworth, Holgate

Benefits Claimants – Aged under 25

York Total

Benefit Claimants aged under 25	number
total	1,640
job seeker	600
ESA and incapacity benefits	350
lone parent	320
carer	30
others on income related benefit	90
disabled	240
bereaved	~
unknown	~
out-of-work benefits	1,360

The LSOAs found in the 20% most deprived LSOAs in the country have the highest number of claimants aged 18-24

Domestic Violence

- C16% of young people 20-24 –c24% below 24 yo
- Domestic violence identified as a major factor leading to **death in or related to pregnancy and childbirth: see below.**
- **75% of cases of domestic violence result in physical injury or mental**
- The prevalence of domestic violence is greater among young women (under 24 years), and those who have a long-term illness of disability.
- Domestic violence “the single most quoted reason for homeless”⁴¹ .
- The cost of treating **physical health of victims of domestic violence,** (including hospital, GP, ambulance, prescriptions) is £1.220bn (3% NHS)
- Cost of treating **mental disorder due to domestic violence is** £176,000,000.

Care Leavers

	Cyc 10/11	CYC 11/12	CYC 12/13	CYC Year to date	Stat neighbo ur	Yorks and Humber	England
No of Care Leavers Turning 19 during period	16	19	17	12			
PI147 - % of care leavers in suitable accommodati on	100	94.7	100	91.7	92	88	88
PI148 - % of care leavers in education, employment or training	50	73.7	70.6	91.7	56.7	61	58

of the 846 young people who offended, 64 (8%) were looked after at some point during 2009-2012.

Homelessness (from Jan 2013 to date)

- Total YP seen (Resettlement): 185
- Did not return: 21
- Advice: 57 - Assessed not homeless: 13
- Howe Hill: 32
- SASH: 6
- LAC: 0
- Peasholme: 3 - Arclight: 1
- Mediation/ returned home: 27
- Homeless Presentation: 3
- Still working with: 10
- An average of 45 sixteen and 17 year olds annually used to presented as homeless. Since Howe Hill opened this figure is now 0.

Homelessness - Outcomes

- An average of 45 sixteen and 17 year olds annually used to presented as homeless. Since Howe Hill opened this figure is now 0
- In 18 out of 20 outcome areas there is a improvement in outcomes in the first two quarters in comparison to last year. With 16 out of 20 comparing positively nationally and 19 out of 20 regionally.
- the general trend with most outcomes are still in a positive direction. Implies the full resettlement model in place for young adults is having a significantly positive effect .

Drug - Alcohol Treatment - NDTMS 18-24

Year	In Treatment	Age Breakdown
<i>2012-13</i>	<i>90</i>	<i>13 aged 18 5 aged 19 72 aged 20-24</i>
<i>2013 -14</i>	<i>65</i>	<i>8 aged 18 5 aged 19 52 aged 20-24</i>
2012-13	41	no further age breakdown is available
2013 -14 to date not full year	38	no further age breakdown is available

Young adult carers

- Unrecognised and particularly excluded group
- In total there are 290,000 carers in the UK who are aged 16–24.
- York (census) approx 350 in this age group
- Young adult carers aged between 16 and 18 years are twice as likely to be not in education, employment, or training (NEET) as peers
- Few services commissioned to meet needs of this group
- <http://www.bbc.co.uk/news/uk-england-17065302>

Partnerships

- Transitions to Adulthood Group (T2A).
- Youth Homeless Strategy Group (primarily 16,17 but up to 24)
- Risk and Resilience working up to 25